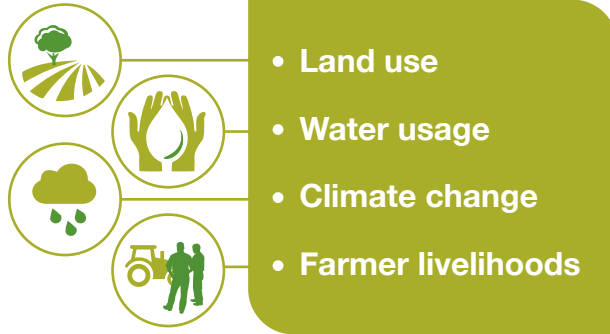


# Sustainability

## What is Cargill doing?

Cargill is building sustainability across food and agriculture. CAN are looking at key focus areas:

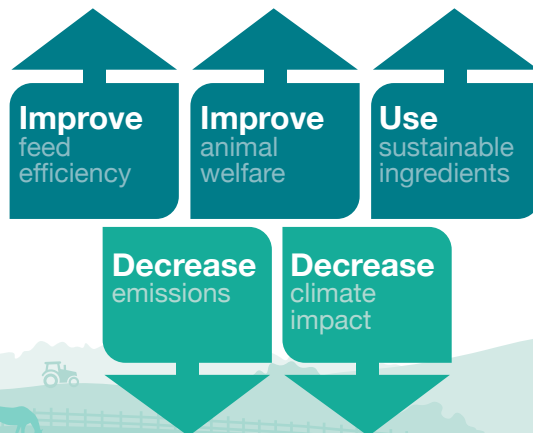


## How is Cargill doing this?

Through the central sustainability hub, supplier codes of conduct, integrated sourcing expertise and global partnerships with environmental organisations.

## What are the outcomes?

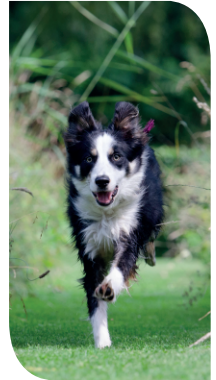
Cargill is developing innovative solutions to help our customers to:



Cargill Animal Nutrition  
Provimi Limited, Dalton Airfield Industrial Estate,  
Thirsk, North Yorkshire, YO7 3HE  
Tel: 01845 578125  
Email: [customerservices\\_dalton@cargill.com](mailto:customerservices_dalton@cargill.com)  
[www.cargill.co.uk/feed](http://www.cargill.co.uk/feed) [www.provimi.co.uk](http://www.provimi.co.uk)

# Cargill Animal Nutrition

Helping pets  
and horses  
*thrive*

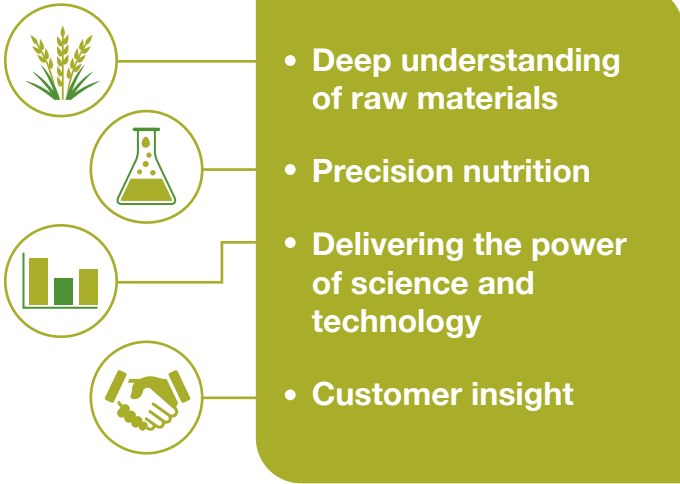


**thrive**



# Global knowledge Researched solutions Local expertise

Looking beyond the horizon – leading with innovation – **Cargill Animal Nutrition** continuously strive to develop innovative feed and nutritional solutions to enhance the vitality, health and well-being of companion animals and horses.



Cargill Animal Nutrition's (CAN) mission is to promote 'better nutrition for better lives'. CAN strive to achieve this through specific supplements and functional ingredients to support e.g. digestive health, immune function and joint health, for all species.

Close relationships with its customers – feed manufacturers, feed merchants, pet care companies, retailers and animal healthcare distributors.



## Product offering



Cargill Animal Nutrition has the in-house technical expertise that can use, and apply, the company's global knowledge base to develop products and services that meet the needs of the local market.

- Premixtures
- Supplements
- Profeed®
- Natural antioxidants
- Young animal nutrition
- Functional ingredients



## Quality and safety

Globally **Cargill Animal Nutrition** has 5 dedicated pet and equine premix plants servicing Europe, South Africa and South America. Our knowledge and expertise ensures products are manufactured to the highest quality and safeguards feed safety.



## CAN are UFAS and BETA NOPS accredited.

CAN are members of the following trade associations:

	<b>BETA</b> (British Equine Trade Association)
	<b>PFMA</b> (Pet Food Manufacturers Association)
	<b>BAFSAM</b> (British Association of Feed Supplement and Additive Manufacturers)
	<b>AIC</b> (Agricultural Industries Confederation)

